

Leave your gas detection to the experts

# Detector

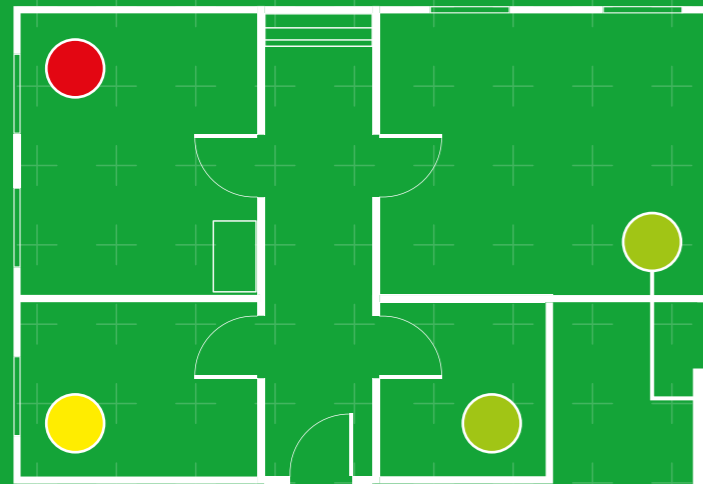
And your environment is safe



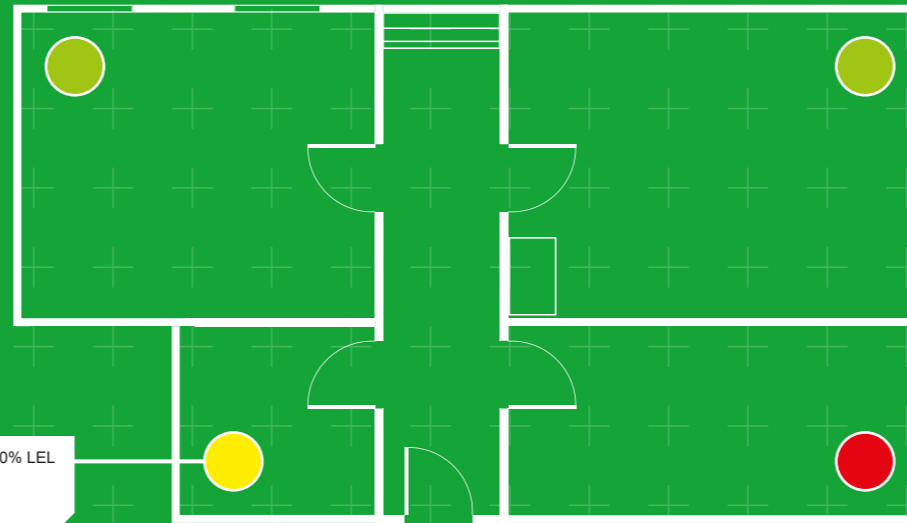
Remote gas detection  
enhances safety

# Detector remote gas detection in a nutshell

- **User-friendly** graphic user interface
- **Flexible** and effective equipment management and reporting



CH. 4, Methane, CH4, 0-100% LEL  
 LIMIT 1: 10% LEL  
 LIMIT 2: 20% LEL  
 LIMIT 3: 20% LEL  
 Current value: 1,3% LEL  
[DETAILS](#)



CH. 5, Methane, CH4, 0-100% LEL  
 LIMIT 1: 10% LEL  
 LIMIT 2: 20% LEL  
 LIMIT 3: 20% LEL  
 Current value: 11,0% LEL  
[DETAILS](#)

## Advantages of remote gas detection

**Remote gas detection** provides real-time, up-to-date data, thus making it possible to immediately respond to any problem situations, regardless of time or place.

## With remote gas detection:

- **The status of gas detection** can be monitored in real-time anywhere
- **The customer floorplan** can be used as the base map
- **The status of equipment** is displayed on the base map: Green indicates that all systems are go; yellow indicates that an alarm limit has been exceeded; and red indicates that a danger limit has been exceeded.
- **Long-term detection data** is also available



## Customer benefits

- **Improves** cost effectiveness and profitability, and reduces travel costs
- **The ability to monitor** regardless of time or place enhances the use of resources
- **Enhances** operational reliability and safety at the workplace
- **Increases** personnel and customer satisfaction
- **Allows** for equipment-independent monitoring with both computers and mobile devices

# Carefree safety

# Detector

Detector Oy, Telekatu 8, 20360 Turku

tel: +358 (0)207 756 480

detector@detector.fi

www.detector.fi

